



WIFI KIT FOR NIRVANA HEAT PUMP

FC SERIES WITH SERIAL NUMBER >170715 (2024)



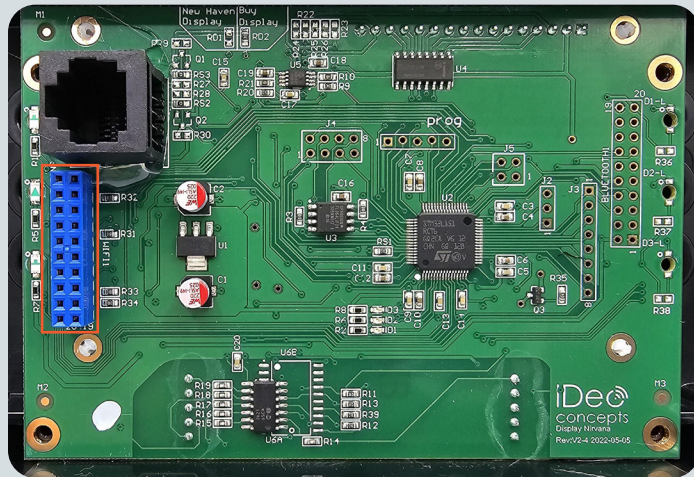
WIFI KIT COMPONENTS

WIFI MODULE

This module is used to connect your heat pump to an internet service that allows remote temperature control.

Installation is done in 3 parts:

1. Installing the module into the machine
2. Configuring the module with your network must be done every time you change networks.
3. Configuring the user's MAC address can be linked to several users as needed.



1. INSTALLATION OF THE MODULE IN THE HEAT PUMP

1. Ensure that the power to the machine has been cut off before opening the control electrical box.
2. Remove the control box by inserting a flathead screwdriver into the notch provided on the side of the box.
3. Remove the screw holding the cable to the control box.
4. Remove the 4 screws to open the control box.
5. Locate the blue connector, which is the WIFI module (it may sometimes be black).
6. **Install** the module onto the control board.
7. **Close the electrical box** and restore power to the machine.

Attention : Connect the module where it is indicated **WIFI** and not where it is indicated Bluetooth. The card is inserted towards the inside of the casing as shown in the 2nd photo below. Installation of the module in the heat pump.

WIFI KIT COMPONENTS

WIFI MODULE

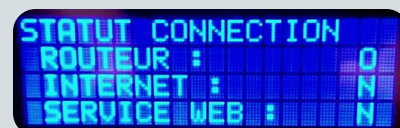
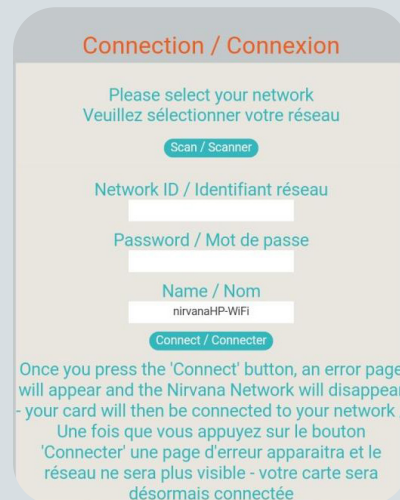
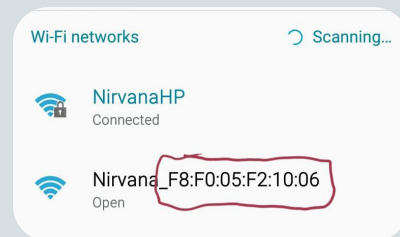
2. MODULE'S NETWORK SETUP

1. Go to the **WIFI** menu.
2. Go to **RECONFIGURE WIFI** and confirm.
3. Once confirmed, use a smartphone or tablet to search for available networks. Identify the network named **NIRVANA_**:**:**:**:**:**** in the description.
4. Connect to the **NIRVANA_**:**:**:**:**:**** network. If you do not see the **NIRVANA** network, reset the module or move closer to the heat pump.
5. Once connected to the card's network, open the web browser and go to the website **nirvanaconf.com**

6. Press **Scan/Scanner**, select your network, enter your network password, and press **Connect/Connecter**.

Attention : An error message may appear on your phone during the connection; this is normal.

7. The screen of your heat pump will display the connection status. If everything goes well, it will indicate **Success! Connected to the Web Service.**



WIFI KIT COMPONENTS

WIFI MODULE

3. USER ACCOUNT SETUP

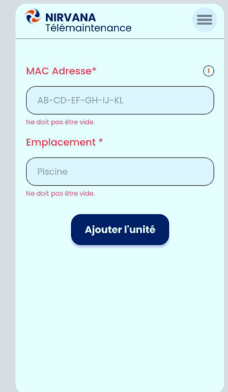
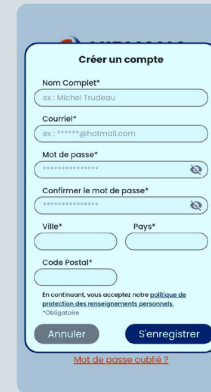
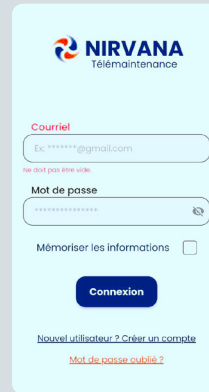
1. Download the Nirvana HP application available for **iOS** et **Android**.

2. Open the application and create a user account by completing the form and tapping on **Register** to finish.

3. Tap on **Scan QR code** and scan the code on the sticker to automatically fill in the MAC address field of your module.

If you don't have access to the QR code, tap on the **I don't have access to the QR code** button and enter it manually

Once the MAC address is entered, tap on **Save**.



4. A confirmation email will be sent to your email address. **Click on the link** to confirm the creation of your account. If you don't see the email, **please check your spam/junk email folder**.

5. You are now ready to remotely control your heat pump.

